



# the capitol STAR

www.mbca.org/sacramento

The MERCEDES-BENZ CLUB of America • Sacramento Section Sep-Oct 2011

### In This Issue.....

Next Section Event	1
President's Msg	2
Tri Star Traffic	3
Upcoming Events	4-5
Von Housen Classic Car Club	5
Classified Ads	7

### Calendar Of Events

- Sept 17th, 10:45AM  
Bill's Hastily Put Together Event  
Preston School of Industry lone
- October 15th 9:30  
A Little Something For Everyone  
Mark & Kim Reese
- November – Planning Mtg
- December Christmas Party –  
Kevin and Gloria McKnight

## A Little Something For Everyone!

Come join us on **Saturday, October 15<sup>th</sup>, 2011** for a fun day in the Sierra Foothills; a little car driving down twisty-turn roads, a little glass blowing, a little wine tasting, and lunch at the Golf Course!

We'll begin our day at **Newcastle Produce** (9230 Cypress Street, Downtown Newcastle) where they have wonderful coffee, hot chocolate and breakfast treats. They open at 9:00am, and we'll plan on leaving there about 10:00 so get there accordingly if you plan on having a treat beforehand.

Next we'll be taking some back roads to **Nicholson Blown Glass** (5555 Bell Road, Auburn), to meet Rick & Janet Nicholson who blow the most amazing works of art. Check out their web-site at [www.nicholsonblownglass.com](http://www.nicholsonblownglass.com). They actually provided glass ornaments for The White House Christmas Tree when Bill & Hillary Clinton were in office! They'll have similar ornaments for purchase, among other things, if you're already in that Christmas Shopping Mode. We'll probably be there for 1-1/2 to 2 hours.

From there, we'll be traving just a little ways down the road to **Fawnridge Winery** (5560 Fawnridge Road, Auburn - [www.fawnridgewine.com](http://www.fawnridgewine.com)) to meet Stewart and Stephanie Perry, who make some wonderful wines. When we're there, look up at the light fixtures; all handcrafted by the Nicholson's.

Our last official stop will be the **Auburn Valley Country Club** (8800 Auburn Valley Road, Auburn). We will enjoy a wonderful lunch overlooking the golf course. We'd tell you more about the lunch, but it will depend on how many people we have attending. If there's only a few we will order off the regular menu which runs \$10 –20 per person plus tax & tip, however if there's more then they'll have us use the "catering menu" which is \$25.00 per person including tax & tip. This is a no-host lunch. Once we know who's coming we'll send you the menu!

That's the end of the "Official Outing," however there are several wineries within a 5 mile radius, plus other artists and more twisty-turny roads, so your day doesn't have to end if you're still having a great time.

There is a \$5.00 per car entry, for which you will receive a Raffle Ticket for a fabulous prize! (This fee is actually to ensure that we have an accurate & committed head-count for the lunch.) So check your calendars, and we hope to see you there!

RSVP No Later than Monday October 7th with the coupon on page 5.

**Mark Reese**



# President's Message

by: Tony Otis

## To Scotia and Beyond:

Many thanks to Allen & Joyce Wrenn for their wonderful planning, challenging roads, and thoughtful choices of accommodations for our outing to The Redwoods. About twenty of our members made the trip and we all enjoyed every minute & every mile of it.

Route 36 from Red Bluff to Scotia has to be "The Loneliest Road in California". A few settlements, but that's about it. Don't attempt it half-tanked. There were a bunch on signs advertising "Bulk Top Soil For Sale". Who would need so much top soil?

Saturday evening after dinner two guest speakers from Humboldt County Historical Society gave a slide presentation and spoke of the history, early settlement, development by the logging companies, and early motoring in the area.

Although the local rivers look benign, there has been extensive severe flooding over the years. This has caused some of the towns, roads and bridges to be built & rebuilt over and over. Some posted high water marks on U.S. 101 are unbelievable.

On Sunday we drove a lovely rural back road to Ferndale. It's a Portuguese community of gingerbread Victorian homes

and a main street loaded with shops and galleries. We had hearty lunch at the Victorian Inn and went our separate ways. Thanks again to Allen

& Joyce.

Our "Beyond" took Arlienne, Baron and me to Canada. After our trusty 1990 300SE purged itself of some extra ATF outside Woodland, the following 3400 miles were a waltz. (Dancing with the Star) Stopped in Seattle to go up the Space Needle, took a short ferry to the Olympic Peninsula then a larger ferry on a longer ride to Victoria, B.C. By the way: According to Canadians, B.C means bring cash. Things are more expensive. There's a 12% tax on most everything. We told that this is how they pay for free health care. It takes about a day to get used to kilometers and liters, then everything is okay.

We spent most of a day at the world famous Butchart Gardens north of Victoria. If it's flowers & topiary you want... you've got it here; in well manicured spades.

A third, even larger ferry, took us through a chain of islands to the mainland and Vancouver. From there the Trans-Canada highway starts and takes you up into the Canadian Rockies. July 1st is Canada Day (Like our July 4th). We spent it in Revelstoke, B.C. where we enjoyed a parade and a street fair. Then on to Lake Louise, Banff, into Alberta &

Calgary. Lots of snow on the peaks. Cool weather ( High 50's to Low 70's) and excellent uncrowded roads.

We continued to the border crossing into Montana. This time our papers were in order. WHEW. Spent a day in Glacier national Park. The "Road To The Sun" through the park was still not open due to 70 feet of snow at Logan Pass. At about this time I realized that we had another 1000 miles to go in two days, so the push was on. Our Mercedes can pile on the hours & miles and still deliver us feeling no fatigue and without the aches & pains of confinement. A wonderful vacation was had by all. More Miles & Smiles.

Thanks to Bill Brandt for hosting a great trip to Virginia City. We had an excellent lunch with some of the Reno section folks. Then a walking history tour with a local guide.

Thanks to Allen & Joyce Wrenn for their FSD trip to Volcano & Mokelumne Hill. We were on some two-lane and one-lane roads that were scary. Allen really knows his way around our state.

I'll be leaving in the morning for my annual Pebble Beach trip. Mercedes Benz is the featured marque on it's 125th anniversary. It should be a lot of fun!

**Tony**

## Contact Information for "the Capitol STAR"

Submit articles to:

Bill Brandt

5910 Gloria Dr.

Sacramento, CA 95822

e-mail:

CapitolStar@sbcglobal.net

Deadline for submissions is the 20th of each month.

For changes to articles or ads:

Bill Brandt

5910 Gloria Drive

Sacramento, CA 95822

email:CapitolStar@sbcglobal.net

Deadline for changes to articles or ads is approximately the 26th of each month.

New article ideas:

Bill Brandt

5910 Gloria Dr.

Sacramento, CA 95822

e-mail:

CapitolStar@sbcglobal.net



## Tri Star Traffic By Dan

### High Performance Driving Anyone?

You don't have to be a professional racecar driver to employ some of the techniques that make these people be able to do what they do with a car. Anybody can hit the gas and go fast in a straight line. It takes more thought and planning to truly be a safe driver. By driving more like a well trained, professional driver, we are more likely to be able to stay out of bad situations and stay safe. Have you ever noticed the way the racers go around any track? It's not straight down the middle. How about hand position on the steering wheel- they don't use one hand. Straight line braking is another technique and can be critical in bad weather. Many of these same techniques are taught to law enforcement officers today. Here's some inside information:

"Apexing the curve" is a technique in which you position your car to use as much of your lane while rounding a curve to minimize the forces that would put you into the wall. The first thing to know is to position your car for a "high entry." This means, for instance, if you are on a connector ramp from one freeway to another and the ramp curves to the right, you put your car to the left side of the lane within the lane and vice versa. As you are in the curve you bring the car closer to the right side of the lane until you are approximately 2/3rds around the curve, then let out the steering so you float back out to the left by the time you straighten out.

Hand position on the steering wheel is a constant technique to be considered. The worst position that I have ever seen is driving with one hand,



# Mercedes-Benz

## Von Housen Automotive Group

Sacramento | El Dorado Hills | Rocklin

Vonhousen.com

**MBCA Members** get a 10% discount on Parts and/or Labor when you show us your membership card.



*Some of the cars on our Aug 7 FSD on the way to Volcano. I thought I knew the area but Allen Wrenn showed us some beautiful roads never travelled....*

To join the email list for our monthly notifications just drop an email to [joinsacfsd@att.net](mailto:joinsacfsd@att.net)

**Bill Brandt**

### *Tri Star Traffic (Continued)*

palm down at the bottom of the wheel. The best for daily driving is the 9 and 3 o'clock position. It helps with fatigue and you are already in a position to quickly steer around problems. NASCAR drivers use 10 and 2 in anticipation of having to countersteer if the rear end breaks loose.

Straight line braking is just that. Braking while driving in a straight line- not on a curve. One of the easiest ways to lose control of your car is to hit the brakes while in a curve when you got into that curve too fast. This is especially a problem when the road is wet. The best way to avoid this is to slow down while in a straight line prior to the curve- then you can apex that curve while using good hand position and come out of it looking like a champ!

As always, I can settle rumors and bets, but not court cases. Send me any questions about anything related to traffic, safety, enforcement philosophies, etc..

**Dan**

### **Our Monthly First Sunday Drive.....**

On August 7th the Sacramento Section hosted its monthly First Sunday Drive – from Rancho Murrieta to the old gold rush town of Mokelumne Hill, with lunch at the historic Leger Hotel.

Our own **Allen Wrenn** planned this drive. Allen is a retired CalTrans official, and he's shown us roads that most of us (including me) never knew existed!

We stopped for a half hour or so in the town of Volcano, a gold rush town "off the beaten path"

When we wandered into the St George Hotel we knew we would have to have another Section event there. To walk into that hotel is to step back in time 150 years. And their back garden area is - shall we say - serene?

From Volcano we meandered – and with those twisting and scenic roads the term "meander" is appropriate – until we got to the Leger Hotel – an equally historically hotel for lunch in Mokelumne Hill. To join the email list for our monthly notifications just drop an email to [joinsacfsd@att.net](mailto:joinsacfsd@att.net).

### **Bill's Hastily Put Together Event - Sept 17th 10:45 Preston School of Industry lone, CA**

A week or so before I wanted to "start thinking" about working on the next newsletter, Hank recently informed me that he wouldn't be able to host his now annual event to Columbia for a play in the historic Fallon Theater. I think he and his new wife Julie (**Congratulations!**) are either in Katmandu or Ensenada right now.

As it happened I also recently met a volunteer who hosts tours of "The Castle" at lone's Preston School of Industry. To tell you the truth this place has always had an aura of mystery for me. As far as I knew it was still being used to house wayward "boys" with the hope they could change for the better. On drives up there – past there – from the early 60s I thought the place looked so foreboding. All I needed to hear was that it is haunted – and they say that it is!

Well, since my chance meeting with this guide I have learned more. They give tours there every 1<sup>st</sup> and third Saturday of the month. Tours are \$10 p/p and run about an hour. I have arranged for a private group tour. My friend Nancy will be the docent and give us the tour at 1:00. It's now a state historic landmark. I think you'd be surprised at some of the "alumni" – who include **Merle Haggard, Eddie "Rochester" Anderson, Rory Calhoun.....**

I thought, given the late notice; we'd do this like a First Sunday Drive. **You have 2 options for getting there.** 1 – if you want to skip lunch just show up there at the gate about 12:45. **Once in lone, Preston Castle is at the end of Palm Drive, off of Highway 104.** 2 - If you'd like to join me for lunch before the tour I have reserved the upper room at lone's Pizza factory for **11:30**. Those of you who have been on my FSDs have been here twice. While the menu is limited (salads, pizza or deli sandwiches) it is good. **If you want to caravan up there** meet me at the Starbucks (another FSD tradition!) for a 10:45 departure. I would get there 15-20 minutes earlier. Like the FSD lunch is no host and optional and you don't need to send me a reservation – just show up. **Starbucks** is at 3110 Sunrise Blvd. It's across the street from the Costco and right past White Rock on the right side, going south. *If you aren't paying attention you will miss it* and have to make a couple of U Turns on Sunrise. I know. **Questions?** Call me at (916) 399-1736.

**Bill Brandt**

## Von Housen Classic Car Club

We invite you to join the all new **Von Housen Classic Car Club**. This Classic Car Club is a complimentary membership for owners of Mercedes-Benz vehicles that **are 8 years or older**.

By joining this exclusive club, you will get the expertise of our seasoned, factory-certified technicians. These experts have the knowledge and specifically designed diagnostic tools for your **Classic Vehicle**.

As an added benefit you will be granted access to our state-of-the-art repair facility before any recommended repairs are completed. Our technicians will be available to answer any questions you might have. This club is offered to ensure that your vehicle will continue to operate at its peak performance and allow you the enjoyment of your vehicle for years to come. After all, you originally bought your Mercedes-Benz as a statement of classic character and comfort. To take advantage of these benefits please visit one of our three locations. Simply stop by the service center and speak to our highly trained service advisors to register for your **Classic Car Membership**.

- Complimentary pick-up and delivery
- Free shuttle service
- Mercedes-Benz loaner vehicle for repairs that take over two hours to complete
- Free towing of your vehicle to nearest dealer courtesy of MBUSA Roadside Assistance
- Complimentary mechanical inspection with every visit
- Complimentary wash and vacuum with every visit
- Drive up courtesy wash with membership sticker
- 8 to 14 years old = 15% off parts and labor repairs
- 15 to 19 years old = 20% off parts and labor repairs
- 20 years and older = 25% off parts and labor repairs
- Membership is transferable
- Complimentary complete detail once per year

We hope to see you soon so you can start taking advantage of these benefits.  
Sincerely,

**The Von Housen Automotive Group**

**Mercedes-Benz of Rocklin • Mercedes-Benz of El Dorado Hills • Mercedes-Benz of Sacramento**

### ***A Little Something For Everyone - October 15th, 2011***

***RSVP No Later than Monday October 7th.***

Name: \_\_\_\_\_ Number in your Car: \_\_\_\_\_

E-Mail: \_\_\_\_\_ (So we can e-mail you the menu with a Google Map of the drive)

Send your \$5.00 Raffle Ticket Entry to:

Mark & Kimberli Reese  
PO Box 712  
Applegate, CA 95703

Call with any questions – Mark's Cell: 916/626-2828 or Kimberli's Cell: 916/316-8162  
or **E-mail us at: reese340olive@hotmail.com**

## Welcome New Members

Scott Cable	Sacramento
Butch Corum	Sacramento
Ken Grewal	Roseville
Douglas Jones	Weaverville, CA
Brian McNeil	Sacramento
David Monti	Rancho Murieta
James Roxburgh	Wilton, CA
Daniel Shapiro	Sacramento

Order your MBCA name badge for \$8-\$9.50 at the club store in the Star Magazine

## Mercedes-Benz Club of America

### Sacramento Section Officers | 2008-2010

President .....	Tony Otis .....	(916) 536-0704
Vice President .....	Skip Ibenthal .....	(916) 434-5953
Secretary .....	Bill Brandt .....	(916) 399-1736
Treasurer .....	Sandra Reese .....	(530) 878-1999
Director at Large .....	Hank Pezzetti .....	(916)687-4792
Past President.....	Hank Pezzetti .....	(916)687-4792
Past President.....	Bill Brandt .....	(916) 399-1736

### Staff

Activities Chair .....	Skip Ibenthal .....	(916) 362-7554
Managing Editor .....	Bill Brandt .....	(916) 399-1736
Editor .....	Bill Brandt.....	(916) 399-1736
Historian .....	Open	
Sunshine Chair .....	Peggy Nickerson.....	(916) 427-5686
Webmaster .....	Craig Griffith.....	(916) 941-5525

### MBCA Western Region

Regional Director.....Lance Taylor-Warren.....(775) 322-4233

## Join MBCA

To join the Mercedes-Benz Club of America, call the MBCA National Business Office at **(800) 637-2360** and use your VISA or MasterCard. Membership dues are \$45 annually. The dues include six issues of "The STAR" each year, plus your local section's newsletter (like this one). To pay by mail, make your check payable to MBCA, and mail it along with your name, spouse's name, address and telephone numbers and occupations to:

**Mercedes-Benz Club of America, Inc.  
National Business Office  
1907 Lelaray Street  
Colorado Springs, CO 80909**

Or, ask a member for an application. You can also join by visiting MBCA on the Web:

<http://www.mbca.org>

Also, check out our local web site:

<http://www.mbca.org/sacramento>

### Moving?

You must contact MBCA National at the above address or phone number. The address list comes to us mostly from National. We cannot make changes locally.

## Please Note:

The Capitol STAR is the official publication of the Sacramento Section of the Mercedes Benz Club of America and is provided solely for the benefit of the members. Opinions and ideas are for information only. No official authentication is implied by the editor/publisher, MBCA, MBUSA, MBAG or DBAG. No inference should be made that the products or services advertised or reported herein have the approval of the Editor/Publisher, MBCA, MBNA, MBUSA, MBAG or DBAG. Permission to reproduce material original to the capitol STAR is granted provided proper permission and credit is given.

## Mercedes Mart

This column is the Sacramento Section's want ads. The vehicles must be Mercedes. Mercedes accessories are also accepted. The ads will be printed for 3 months, at which time the seller must renew them. Cost for Sacramento Section members is free – Free space will also be given to MBCA members of other Sections on a space available basis. Non-members can advertise here for \$30 for 3 months. If you are a non-member, you may wish to join MBCA since you can also advertise in our national magazine *The Star* at no charge. We have a circulation of 350 members. Send a copy of your ad, including your name and phone number, to Bill Brandt, 5910 Gloria Drive, Sacramento CA 95822 or email [CapitolStar@sbcglobal.net](mailto:CapitolStar@sbcglobal.net). Because of complaints from past sellers of overseas **scams** think twice about including your **email address**.



### 1983 380SL

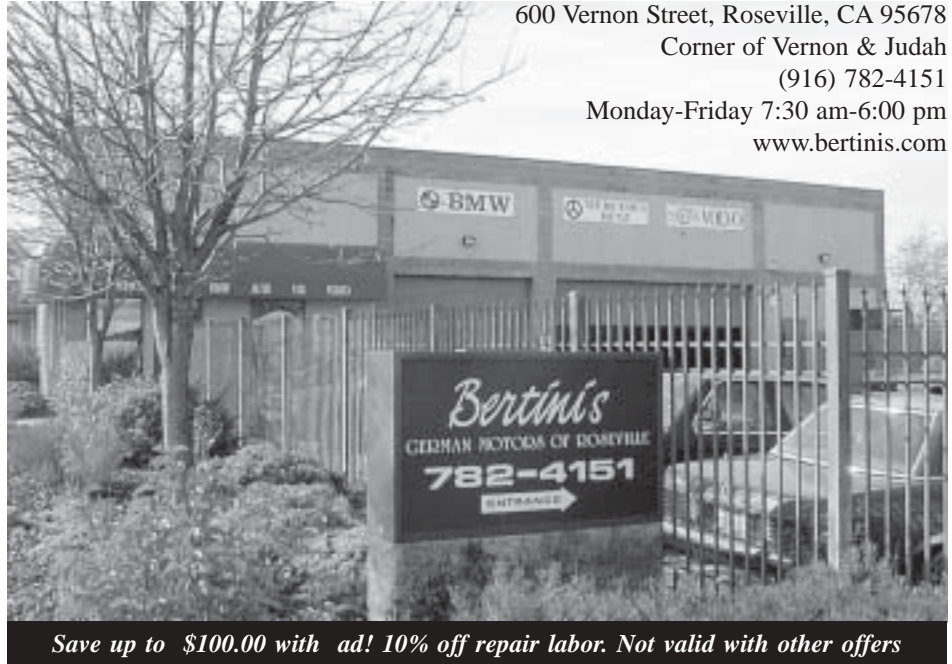
DB 473 Metallic Champagne Tan Leather interior.

Well maintained at MB Rocklin and MB Sacramento.

New sheepskins and mats. Must see to appreciate.

**\$6500**

**916 791 0066**



*Save up to \$100.00 with ad! 10% off repair labor. Not valid with other offers*

600 Vernon Street, Roseville, CA 95678  
 Corner of Vernon & Judah  
 (916) 782-4151  
 Monday-Friday 7:30 am-6:00 pm  
[www.bertinis.com](http://www.bertinis.com)

**To get on the First Sunday Drive monthly email list ....  
 Send an email to  
[join-sacramento@firstsundaydrives.com](mailto:join-sacramento@firstsundaydrives.com)**



**1991 300SE.** Well maintained Model W126, runs perfectly, all original paint, black, no dings, Palomino leather with no flaws, everything works. Original manuals, tools and invoice sticker. Maintenance records, mileage records and car cover. 109,200 miles. MB dealer maintained.

**\$8,500.**

**Bill - (209) 728-3208.**

**1979/80 300TD M-B** original yellow/brown MB-Tex. 250,000 miles. Very good original condition. No rust California car. Was running very well when shut off and now will not start. Everything else was working except cruise control (needs rebuilt controller). Euro headlamps (originals with car) Always garaged. Sunroof, interior wood trim. Voted one of 10 best cars for teenage driver. I am no longer able to work on car. Parts car included if wanted. **Any reasonable offer accepted.**

### Parts for sale

**1973 220D/8 M-B Head**, complete with valves, cam, valve cover etc. Approximately 20,000 miles since new, ready to install. Removed from rebuilt engine having lower end damage. **1973 220D/8 M-B Short block** with pan, low mileage since rebuilt, #1 piston collapsed, damaged bore. **1973 220D/8 M-B Bosch Injection pump**, low mileage since rebuilt, ready to install. **1971 M-B 3.5 V-8 engine** for convertible/coupe, complete with transmission and computer. 32,000 miles since rebuilt. Removed from wrecked car. Will sell or trade for labor to get 300TD repaired.

**Art - 530-675-2773**

*the capitol*

**STAR**

*5910 Gloria Dr.*

*Sacramento, CA 95822*

*First Class Mail*

